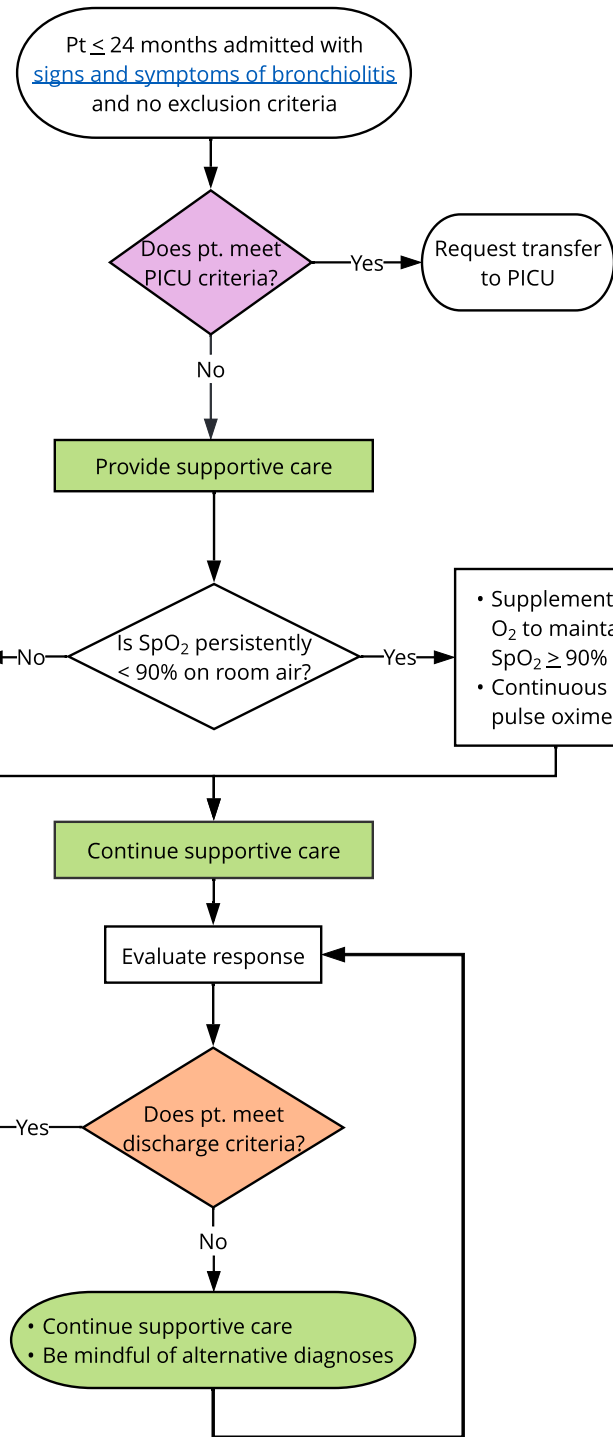




QR code for mobile access

- Exclusion criteria:**
- For infants < 60 days of age with fever consider whether sepsis workup is indicated (link to [Febrile Infant](#))
  - Alternative diagnosis, such as:
    - [Sepsis](#)
    - [Asthma](#)
    - [Pneumonia](#)
    - Congestive heart failure
    - Pertussis
    - Chronic lung disease
    - Airway obstruction
      - [Croup](#)
      - [Foreign Body Aspiration](#)



- PICU criteria:**
- On HFNC requiring > 40% FiO2 or > 2 L/min/kg or 30 L/min
  - Recurrent apnea requiring close monitoring
  - Severe respiratory distress
  - Hypercarbic respiratory failure/refractory hypoxemia

- Supportive care:**
- Nasal or nasopharyngeal suctioning as needed
  - Supplemental O<sub>2</sub>
  - Offer PO feeds. If not taking adequate PO, consider NG (preferred) or IV hydration ([Bronchiolitis Feeding CAT](#))
  - Antipyretics as needed
  - For otherwise healthy pt, cardiac monitor is not routinely indicated
- If considering HFNC:**
- See HFNC site-specific information ([link to CMH HFNC holiday algorithm](#))

- Discharge criteria:**
- Minimal to no increased work of breathing
  - No need for supplemental oxygen
  - Tolerating adequate PO intake
  - Access to follow-up care if needed

- Evidence does NOT support routine use of the following:**
- [Albuterol](#)
  - [Hypertonic saline](#)
  - Systemic or inhaled corticosteroids
  - Racemic epinephrine
  - Chest radiography
  - Laboratory tests
  - Antibiotics

- Abbreviations (laboratory & radiology excluded):**
- IV = intravenous
  - NG = nasogastric tube
  - PO = by mouth
  - pt. = patient
  - HFNC = high flow nasal cannula
  - PICU = Pediatric Intensive Care Unit