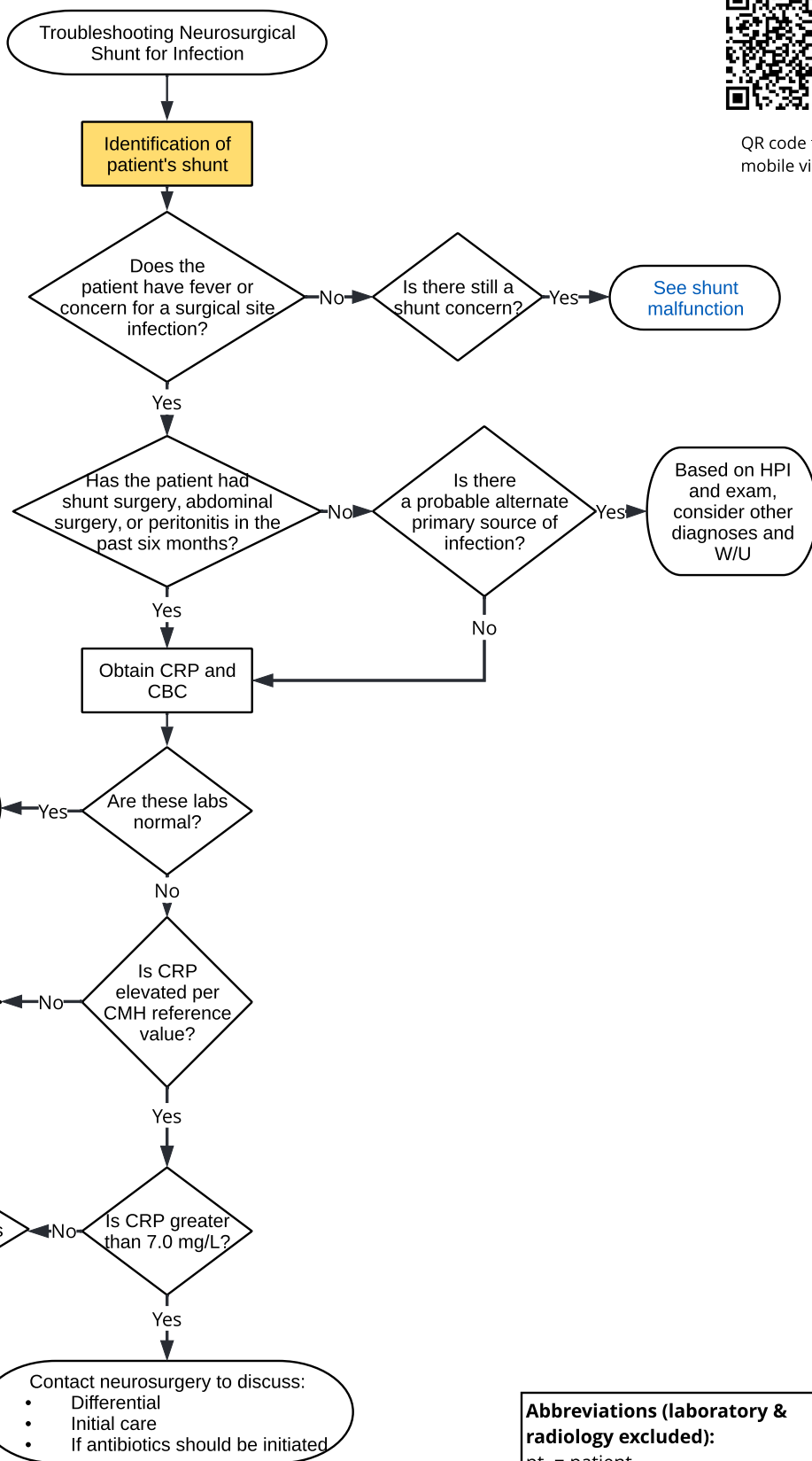




QR code for mobile view

- Shunt types:**
- Shunts used to treat hydrocephalus:
    - Ventriculo-peritoneal (VP)
    - Ventriculo-atrial (VA)
    - Ventriculo-pleural (VPI)
  - Neonatal shunts to treat intraventricular hemorrhage:
    - Ventriculo-subgaleal (VSG)
    - Ventricular reservoir / access device (VAD)
  - Cranial shunts not used to treat hydrocephalus:
    - Subdural-peritoneal (SDP)
    - Cysto-peritoneal (CP)
  - Spinal shunts:
    - Lumbo-peritoneal (LP)
    - Syringo-pleural (SP)
    - Syringo-subarachnoid (SSA)



**Abbreviations (laboratory & radiology excluded):**  
 pt. = patient  
 HPI = history of present illness  
 CRP = C-reactive protein  
 CBC = Complete Blood Count  
 W/U = Workup