

### "Other" VTE Risk Factors

#### ACUTE CONDITIONS

- COVID/Multisystem inflammatory syndrome in children (MIS-C)
- Patient in ICU
- Acute infection either:
  - Known active viral infection
  - Current antibiotic treatment
- Burns
- Major lower extremity orthopedic surgery
- Major trauma
- Lower extremity central venous catheter
- Pregnancy
- Active cancer
- Spinal cord injury
- Acute inflammation
- Severe dehydration
- Protein-losing disorder

#### CHRONIC MEDICAL CONDITIONS

- Estrogen containing medications
- Obesity
  - Weight > 80 kg in age 12-16
  - Weight > 85 kg over age 16
- Inflammatory bowel disease
- Malignancy
- Nephrotic syndrome
- Known acquired or inherited thrombophilia
- Cyanotic heart disease or low flow states

#### HISTORICAL FACTORS

- Surgery within last 30 days
- Previous history of DVT/PE
- Family history of VTE in 1st degree relative < 40 yrs

#### CONTRAINDICATIONS TO ANTICOAGULATION

- Intracranial hemorrhage
- Infants at high risk for IVH/intracranial hemorrhage
- Ongoing and uncontrolled bleeding
- Uncorrected coagulopathy
- Incomplete spinal cord injury with suspected or known paraspinal hematoma
- Allergy to UFH or enoxaparin
- Heparin induced thrombocytopenia
- Thrombocytopenia
- Acute stroke or brain ischemia
- Inability to maintain platelet count above 30,000/mcL
- Epidural anesthesia
- Risk of invasive procedure within 24 hours
- Congenital bleeding disorder
- Uncontrolled severe hypertension
- Intracranial mass

- [Concern for Pulmonary Embolism](#)
- [Alteplase dosing](#)

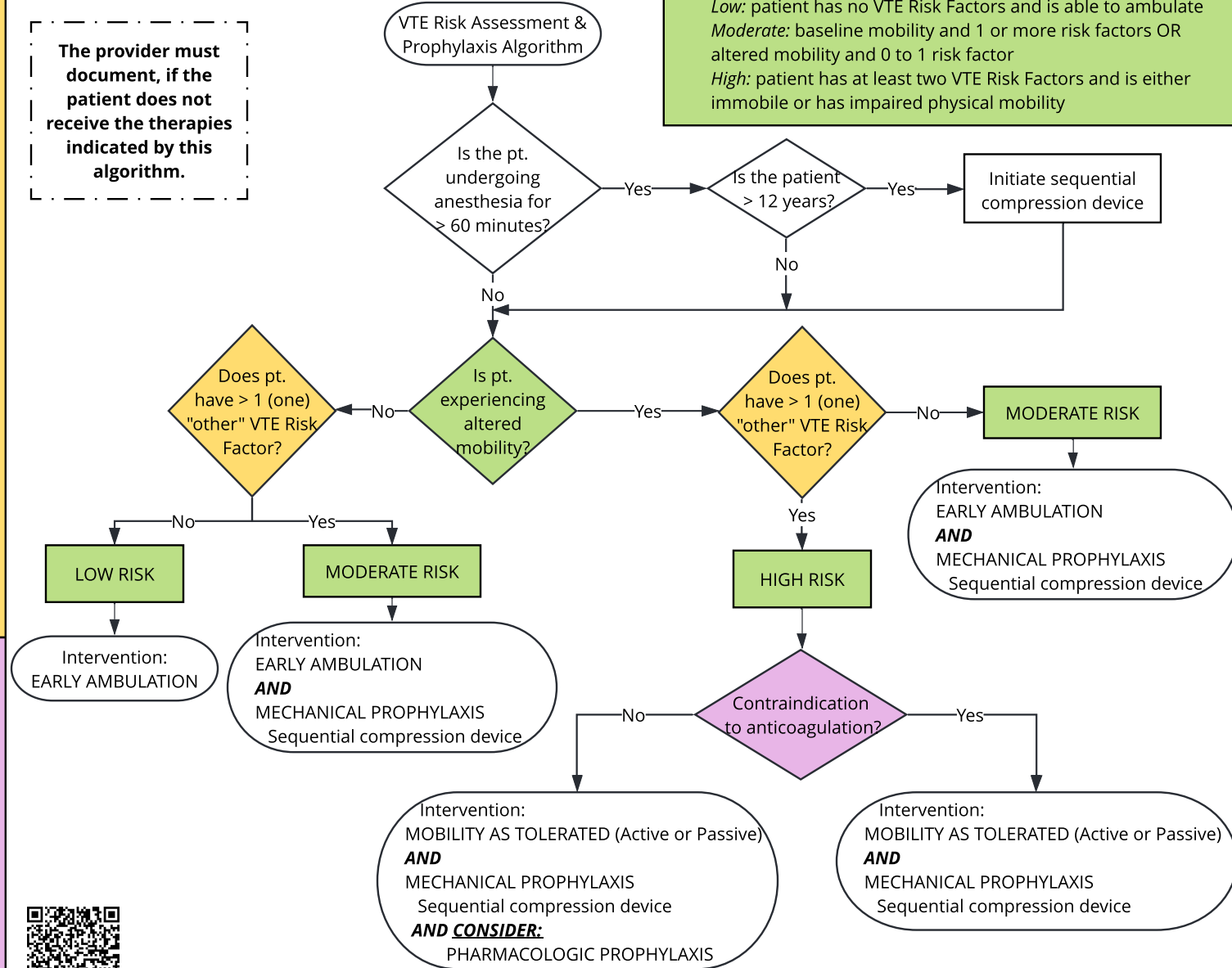
**The provider must document, if the patient does not receive the therapies indicated by this algorithm.**

#### Definitions

**Altered Mobility:** refers to either a permanent or temporary state in which the patient has a limitation in independent, purposeful physical movement of the body or of one or more extremities

**Levels of Risk:**

- Low:** patient has no VTE Risk Factors and is able to ambulate
- Moderate:** baseline mobility and 1 or more risk factors OR altered mobility and 0 to 1 risk factor
- High:** patient has at least two VTE Risk Factors and is either immobile or has impaired physical mobility



QR code for mobile view