

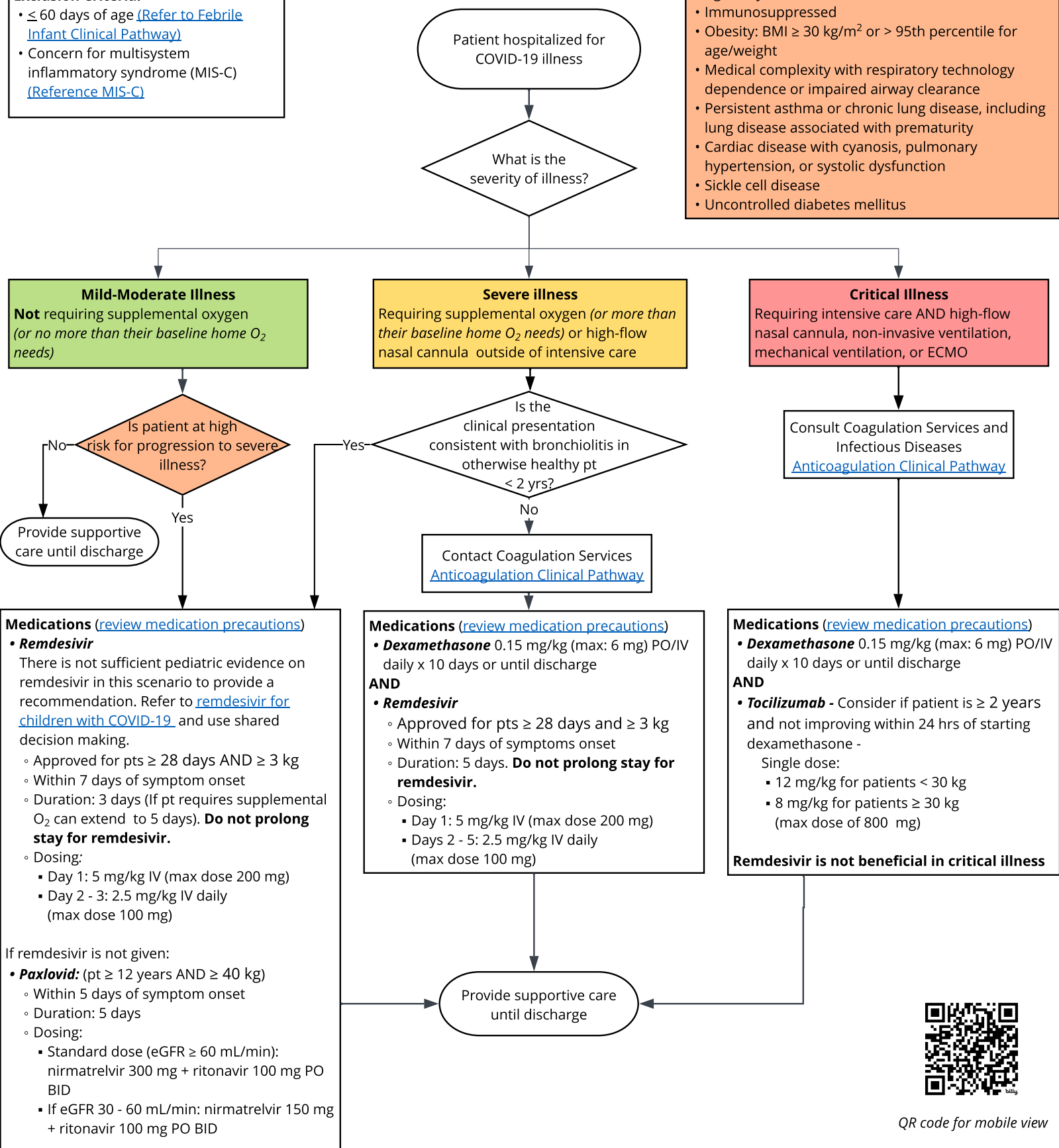


Exclusion Criteria:

- ≤ 60 days of age ([Refer to Febrile Infant Clinical Pathway](#))
- Concern for multisystem inflammatory syndrome (MIS-C) ([Reference MIS-C](#))

High Risk of Progressing to Severe Disease
Regardless of COVID-19 immunization status
ANY of the following:

- Age < 1 year
- Immunosuppressed
- Obesity: BMI ≥ 30 kg/m² or > 95th percentile for age/weight
- Medical complexity with respiratory technology dependence or impaired airway clearance
- Persistent asthma or chronic lung disease, including lung disease associated with prematurity
- Cardiac disease with cyanosis, pulmonary hypertension, or systolic dysfunction
- Sickle cell disease
- Uncontrolled diabetes mellitus



Medications (review medication precautions)

- **Remdesivir**
There is not sufficient pediatric evidence on remdesivir in this scenario to provide a recommendation. Refer to [remdesivir for children with COVID-19](#) and use shared decision making.
 - Approved for pts ≥ 28 days AND ≥ 3 kg
 - Within 7 days of symptom onset
 - Duration: 3 days (If pt requires supplemental O₂ can extend to 5 days). **Do not prolong stay for remdesivir.**
 - Dosing:
 - Day 1: 5 mg/kg IV (max dose 200 mg)
 - Day 2 - 3: 2.5 mg/kg IV daily (max dose 100 mg)

If remdesivir is not given:

- **Paxlovid:** (pt ≥ 12 years AND ≥ 40 kg)
 - Within 5 days of symptom onset
 - Duration: 5 days
 - Dosing:
 - Standard dose (eGFR ≥ 60 mL/min): nirmatrelvir 300 mg + ritonavir 100 mg PO BID
 - If eGFR 30 - 60 mL/min: nirmatrelvir 150 mg + ritonavir 100 mg PO BID

Medications (review medication precautions)

- **Dexamethasone** 0.15 mg/kg (max: 6 mg) PO/IV daily x 10 days or until discharge

AND

- **Remdesivir**
 - Approved for pts ≥ 28 days and ≥ 3 kg
 - Within 7 days of symptoms onset
 - Duration: 5 days. **Do not prolong stay for remdesivir.**
 - Dosing:
 - Day 1: 5 mg/kg IV (max dose 200 mg)
 - Days 2 - 5: 2.5 mg/kg IV daily (max dose 100 mg)

Medications (review medication precautions)

- **Dexamethasone** 0.15 mg/kg (max: 6 mg) PO/IV daily x 10 days or until discharge

AND

- **Tocilizumab** - Consider if patient is ≥ 2 years and not improving within 24 hrs of starting dexamethasone -
Single dose:
 - 12 mg/kg for patients < 30 kg
 - 8 mg/kg for patients ≥ 30 kg (max dose of 800 mg)

Remdesivir is not beneficial in critical illness



QR code for mobile view