

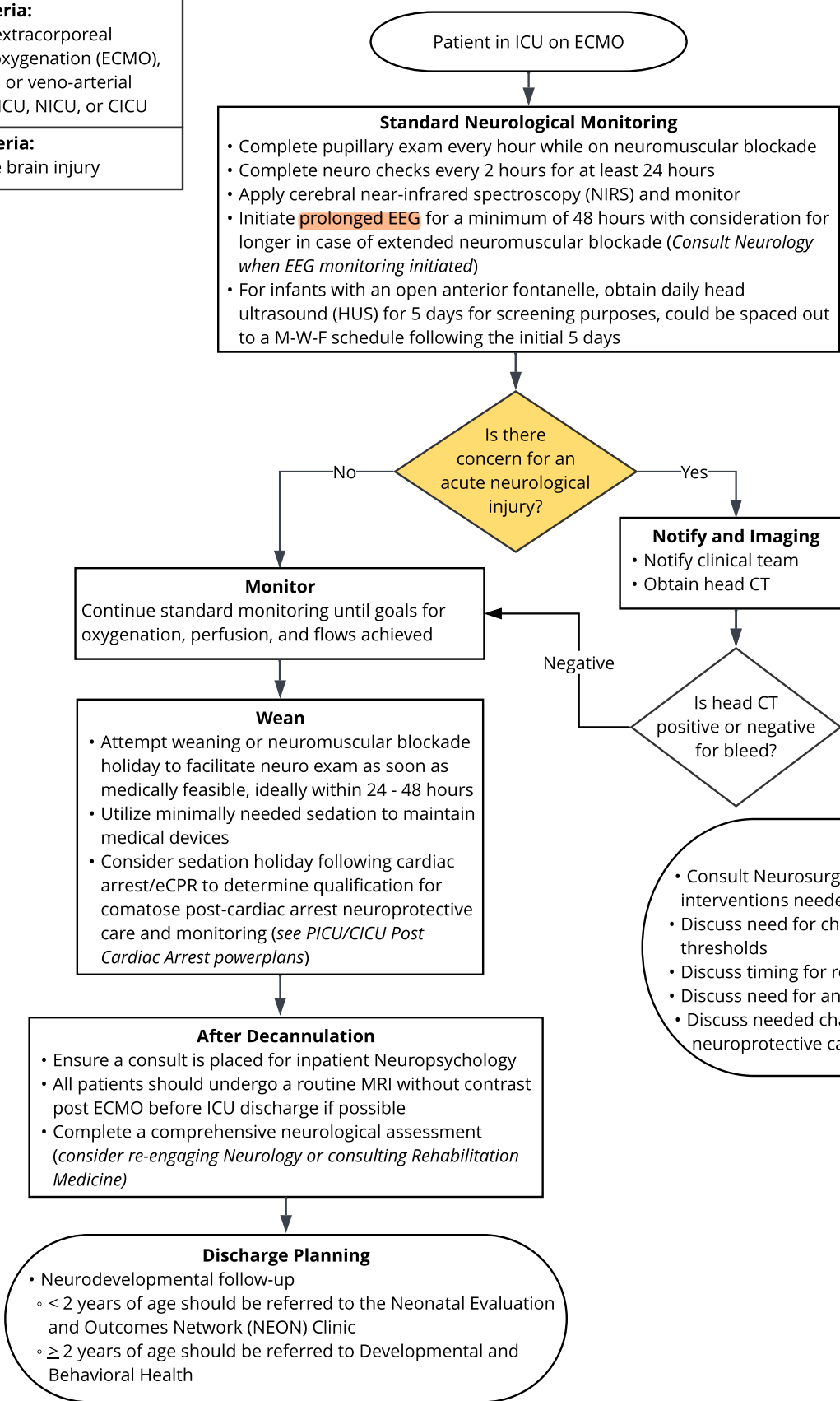


Inclusion criteria:

- Patients on extracorporeal membrane oxygenation (ECMO), veno-venous or veno-arterial
- Patients in PICU, NICU, or CICU

Exclusion criteria:

- Known acute brain injury



Prolonged EEG

- Consider a monitoring holiday at ≥ 5 days in patients who require ongoing neuromuscular blockade to avoid pressure injuries
- Determine level of risk and need for ongoing monitoring with Neurology/Epilepsy

Concerns for Acute Neurological Injury/Abnormal Findings

- **Pupillary exam:** Changes from baseline
- **Neuro checks:** Mental status changes, seizures, weakness, focal neurologic deficit
- **Cerebral NIRS:** Reduction of $>20\%$ from baseline or absolute $crSO_2 < 50\%$ in regional cerebral oximetry
- **Prolonged EEG:** Focal background abnormalities
- **HUS:** Bleeding noted*

*Grade I or Grade II IVH in a neonate may not require a head CT and may be monitored by subsequent HUS

Abbreviations:

ICU = Intensive care unit
 PICU = Pediatric intensive care unit
 NICU = Neonatal intensive care unit
 CICU = Cardiac intensive care unit
 $crSO_2$ = Cerebral oxygen saturation
 IVH = Intraventricular hemorrhage
 eCPR = Extracorporeal cardiopulmonary resuscitation



QR code for mobile view